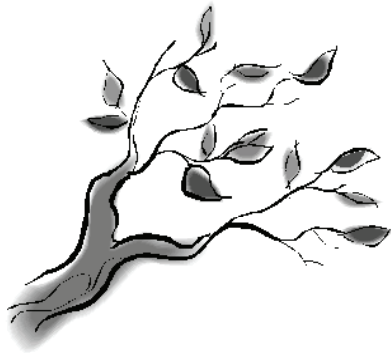




# Yard Waste Collection Guide

## Yard Waste is...

Material such as tree trimmings, shrubbery and any other organic landscape vegetation not listed in the exceptions below.



## Questions?

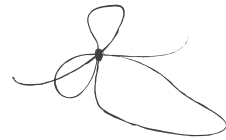
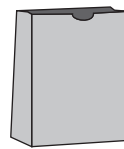
Contact Penn Waste

**1-866-575-8720**

[www.pennwaste.com](http://www.pennwaste.com)

## How to Prepare Yard Waste

1. Place yard waste in biodegradable brown paper bags or bundle it with biodegradable twine in easy-to-handle bundles.
  - Bundles may be no longer than four feet in length.
  - Bundles may not weigh more than 30 pounds each.
  - Branches may not exceed six inches in diameter.
2. Once prepared, yard waste must be placed at the curb on the scheduled pick up day before 6:00 A.M.
3. An unlimited number of bags or bundles may be placed at the curb.



Use a paper bag or bundle with

## DO NOT place these items out for yard waste collection:



Grass Clippings



Fruits & Vegetables



Tree Stumps



Dirt & Stones

**Please prepare your yard waste properly.**

*Yard Waste in plastic bags WILL NOT be collected!*